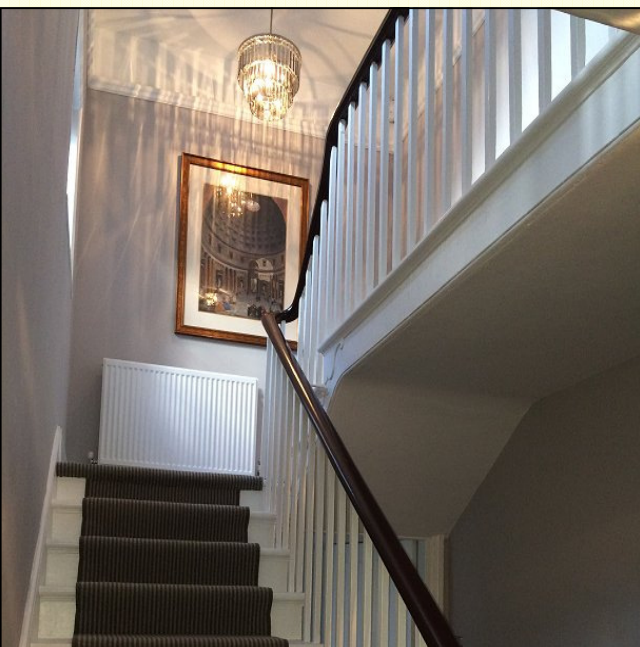
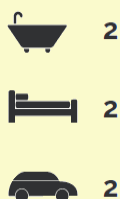




LUXURY SERVICED TOWNHOUSE



2 King size bedrooms
Town centre location
Close to railway station
Secure parking available
Free Wi-Fi
50" Smart TV with Netflix
32" TV in each bedroom



Kings House Wokingham

Kings House is a newly renovated Grade II listed building located in the heart of Wokingham and only a short walk from the station with direct rail links to London, Heathrow, Gatwick and Reading.

The property is a two-storey, spacious townhouse with a new, well equipped kitchen with dining area, separate sitting room with large screen TV, downstairs cloakroom, two large double bedrooms and two bathrooms, one of which is en-suite to the master bedroom.

There is also a basement for storage which includes a games area with dart board.

Available for rental from 01 March, 2016.

Please contact Mike on +44(0)779 9927055, by email to mike@kingshousewokingham.com or via the property's web site below.

www.kingshousewokingham.com



A TASTE OF — LUXURY —

Kings House is an original timber framed house dating from the 16th century with more recent additions such as the brick facade being added in the 18th century Georgian period (1714-1830). Until recently, the house was used as an office but in the last year it has been sympathetically restored back to a luxury residential property with new bathrooms, fitted kitchen and gas heating system.

The property benefits from fire safety and carbon monoxide sensor equipment normally only found in top hotels and has been furnished to the highest standards.

